

## WINDOW

### 4 MODELS

- Inward Opening, Single Vent
- Inward Opening, Double Vent
- Outward Opening, Single Vent
- Outward Opening, Double Vent

Download:



### OPTIONS INSIDE THE MODEL

#### BUILDING CONNECTION

- Type A: Netherlands
- Type B: Belgium
- Type C: International

#### DESIGN VARIANTS

- Functional
- Softline
- Renaissance
- Block Frame

#### DIMENSIONS

- Height and width element
- Visible width frame
- Visible width vent
- Panel thickness
- Shutter roll height

#### FEATURES

- Shutter
- Sill

#### OPENING DIRECTION

- DIN R
- DIN L
- Tilt

#### MATERIALS

- Color inside/outside profile
- Panel material
- Shutter roll material

#### ANALYTICAL PARAMETERS

- Information parameters similar to information on website

#### LEVEL OF DETAIL

- Only Bounding Boxes

## WINDOW DOOR

### 1 MODEL

→ Inward Opening, Single Vent

Download:



## OPTIONS INSIDE THE MODEL

### BUILDING CONNECTION

- Type A: Netherlands
- Type B: Belgium
- Type C: International

### CLOSING BOTTOM

- Brush

### DESIGN VARIANTS

- Functional
- Softline
- Renaissance

### DIMENSIONS

- Height and width element
- Visible width frame
- Panel thickness
- Shutter roll height

### FEATURES

- Shutter

### OPENING DIRECTION

- DIN R
- DINL

### MATERIALS

- Color inside/outside profile
- Panel material
- Shutter roll material

### ANALYTICAL PARAMETERS

- Information parameters similar to information on website

### LEVEL OF DETAIL

- Only bounding boxes

# BIM (Building Information Modelling)

REYNAERS ALUMINIUM NV/SA

Oude Liersebaan 266 • 2570 Duffel

t +32 15 30 85 00 • f +32 15 30 86 00

www.reynaers.com • info@reynaers.com



## REYNAERS BIM MODELS



Building Information Modelling (BIM) is an intelligent 3D model-based process where building information is shared between all members involved in the building process. AEC professionals like architects, engineers, general contractors and fabricators use BIM to plan, design, construct and build in a more efficient way. Architects can use the Reynaers BIM models from the start of the conceptual design stage, for better visualization, all the way to the realisation of the building, generating window schedules with detailed info on the used elements.

The Reynaers BIM models are completely parametric and include different design types, building connections and optional add-ons such as sills and shutters.

The online zip-files include different options within one system such as outward and inward opening, and single and double vent. All models are downloadable on the Reynaers architect website and the website of Bimobject.

## DIMENSION PARAMETERS

### General parameters

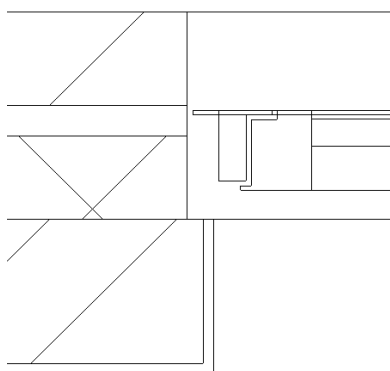
- Height EXT: Visible opening in outside wall
- Width EXT: Visible opening in outside wall
- Wall exterior width: Distance between front of the outer wall and front of the window (default 95mm)

### Building Connections Type A-B-C

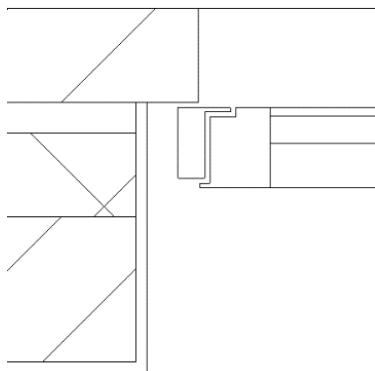
Building connections differ between countries. Reynaers BIM models include parametrical building connection information. For the convenience of the user we have predefined three types of connections (Type A, B, C) most commonly used worldwide.

- REY Building Connection Type A : Opening wall exterior > Opening wall interior
- REY Building Connection Type B : Opening wall exterior < Opening wall interior
- REY Building Connection Type C : Opening wall exterior = Opening wall interior

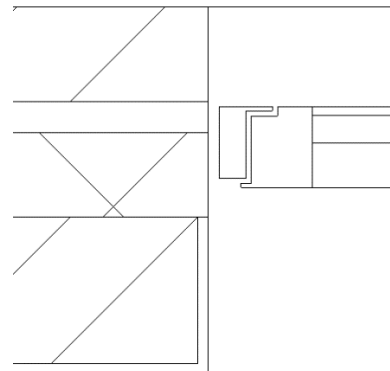
TYPE A



TYPE B

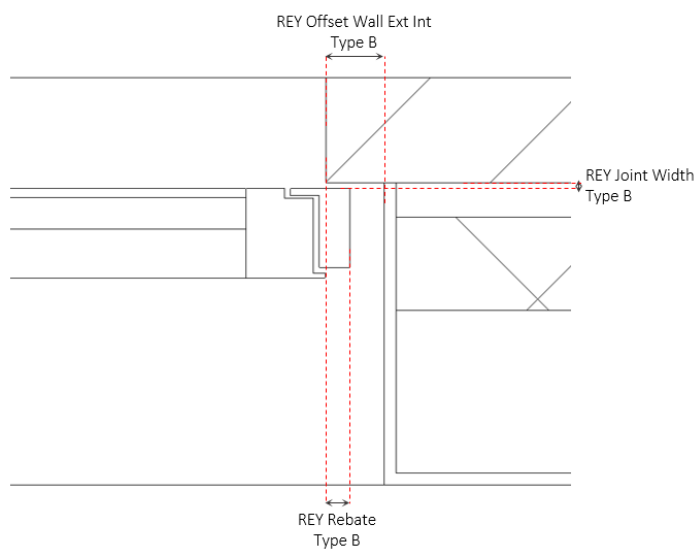


TYPE C



#### Parameters for Building Connections:

- REY Rebate : Distance between window and outside wall
- REY Offset Wall Ext Int : Distance between inside- and outside wall
- REY Joint Width : Distance between the inside of the outside wall and the front of the window profile



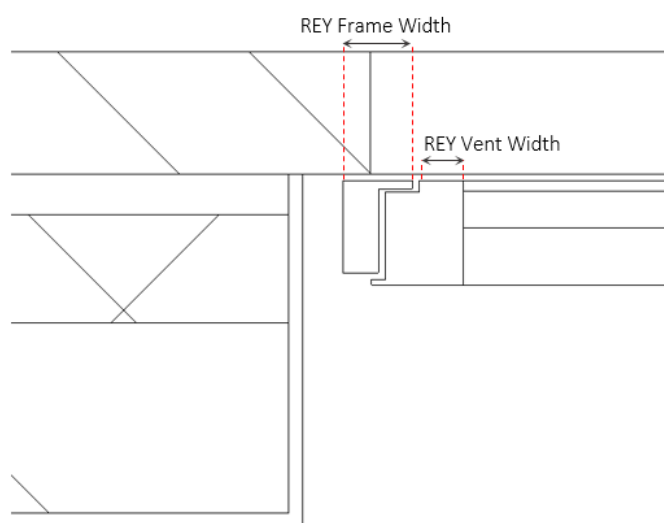
#### Other Parameters

- REY Panel Thickness: Thickness of the panel/glass (possibilities in brackets)
- REY Fixation Bottom: Distance between bottom side of the window and top of the inner wall
- REY Joint Bottom: Distance between top of the inner wall and top of the outer wall
- REY Shutter Roll Height: Height of the shutter roll (if activated)

#### OTHER PARAMETERS

---

- REY Frame Width: Visible width of the frame (possibilities in brackets)
- REY Vent Width: Visible width of the vent (possibilities in brackets)



## GRAPHICAL PARAMETERS

---

### Design parameters

- REY Functional Standard variant (Ex. CS 77)
- REY Softline Softline variant (Ex. CS 77-So)
- REY Renaissance Renaissance variant (Ex. CS 77-Re)

*Functional*



*Softline*



*Renaissance*



### Option parameters

- REY Block Frame Block frame variant
- REY Sill Profile for hidden drainage
- REY Shutter Shutter
- REY Panel Opening Direction Plan view (possibilities: turn and tilt)

*Block Frame*



*Sill*



*Shutter*



## MATERIALS AND FINISHES

---

Materials for the profiles (inside and outside), the panel and the shutter roll can be chosen.

### Reynaers materials

The most popular RAL colours are created as Reynaers materials and can be transferred to your project or your own template:  
RAL 9005, RAL 7021, RAL 7016, RAL 9010, RAL 9001 and RAL 7039

## ANALYTICAL PARAMETERS

---

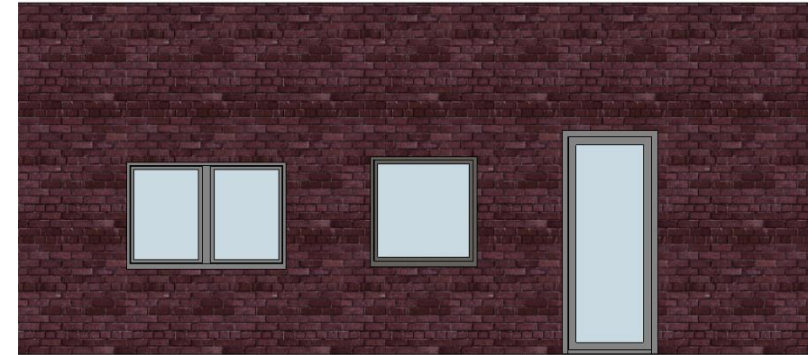
List of analytical parameters that can be used in calculations.

For example: REY Panel Surface Total, REY Panel Surface Visible, REY Uf, REY Rw, REY Air Tightness, REY Wind Load Resistance, REY Water Tightness, REY Burglar Resistance, REY Fire Resistance,...

The Reynaers template consists of a standard wall, a schedule and a limited amount of materials

Reynaers schedule: Reynaers TOTAL

Using the Reynaers schedule “Reynaers TOTAL”, detailed information of all configurations used in your project will be listed. Information such as element width/height, frame and vent width, panel dimensions, can be used by a Reynaers fabricator as input for Reynapro, our internal calculation system.



A	B	C	D	E	F
Family and Type	Width EXT	Height EXT	Width INT	Height INT	REY Element Width
Reynaers_CS 77_Window_Inside Opening_Single Vent: Reynaers_CS 77_Window_Inside Opening_Single Vent	1000	1038	1100	1088	1040
Reynaers_CS 77_Window_Inside Opening_Double Vent: Reynaers_CS 77_Window_Inside Opening_Double Vent	1500	1000	1600	1050	1540
Reynaers_CS 77_Window Door_Inside Opening_Single Vent: Reynaers_CS 77_Window Door_Inside Opening_Single Vent	900	2100	1000	2142	940